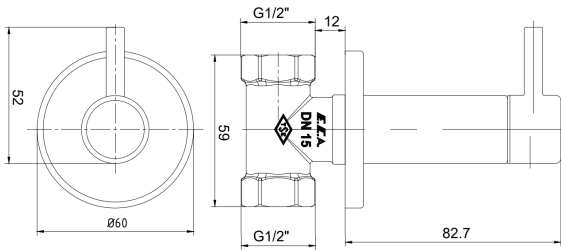


## E.C.A. CONCEALED STOP VALVE



### Product Description

Product Number	102126441EX
Product Name	Concealed Stop Valve
EAN Barcode	8693261067022

### Technical Specification

Cartridge Type	Closed System Headwork Group
Min. Water Pressure	0,5 bar
Max. Water Pressure	10 bars
Recommended Water Pressure	3 bars
Inlet Water Temperature	5°C - 65°C
Supply Connection	G 1/2" Threads
Finishing	Chrome
Body Material	Metal Alloy & Plastic

### Product Variants

102126441xx	xx Localization Product Number
-------------	--------------------------------

January 2021

We reserve the right to alter product specification and colors and to make technical modifications without prior notice.

[www.ECA.com.tr](http://www.ECA.com.tr)