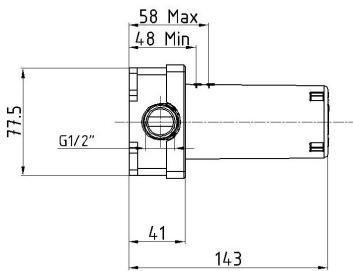
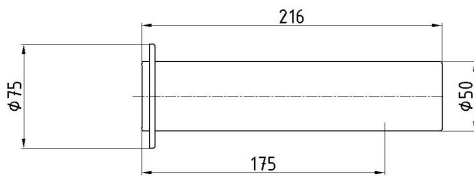
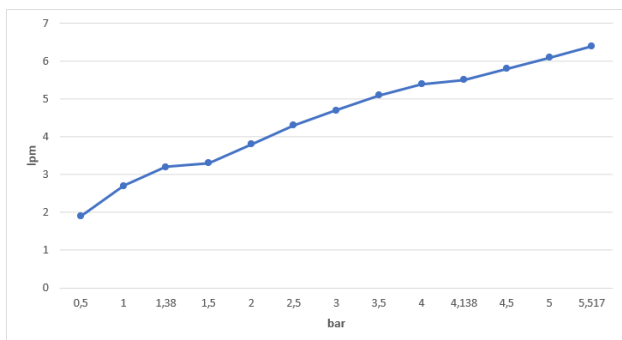


## E.C.A. INFRARED CONCEALED BASIN MIXER



**Flow Rate Chart**



### Product Description

Product Number	108105001EX
Product Name	Battery Operated Concealed Basin Mixer
EAN Barcode	8693261056880

### Technical Specification

Aerator	Neoperl Caché
Cartridge Types	Adjusting Shaft for Temperature Control Solenoid Valve - 6V for On/Off Control
Min. Water Pressure	0,5 bar
Max. Water Pressure	10 bars
Recommended Water Pressure	3 bars
Nominal Flow Rate @3bars	4,7 l/m
Inlet Water Temperature	5°C - 65°C
Supply Connection	G 1/2" Thread
Supply Power	4xAA 1,5V Lithium Batteries
Finishing	Chrome
Body Material	Brass

### Color Options

108805001EX	Gold Effect
-------------	-------------

### Product Variants

108105001STEX	Basin Mixer Water Saving 1,7 l/m
108105002EX	Mains Operated Concealed Basin Mixer
108105001xx	xx Localization Product Number

January 2021

We reserve the right to alter product specification and colors and to make technical modifications without prior notice.

[www.ECA.com.tr](http://www.ECA.com.tr)